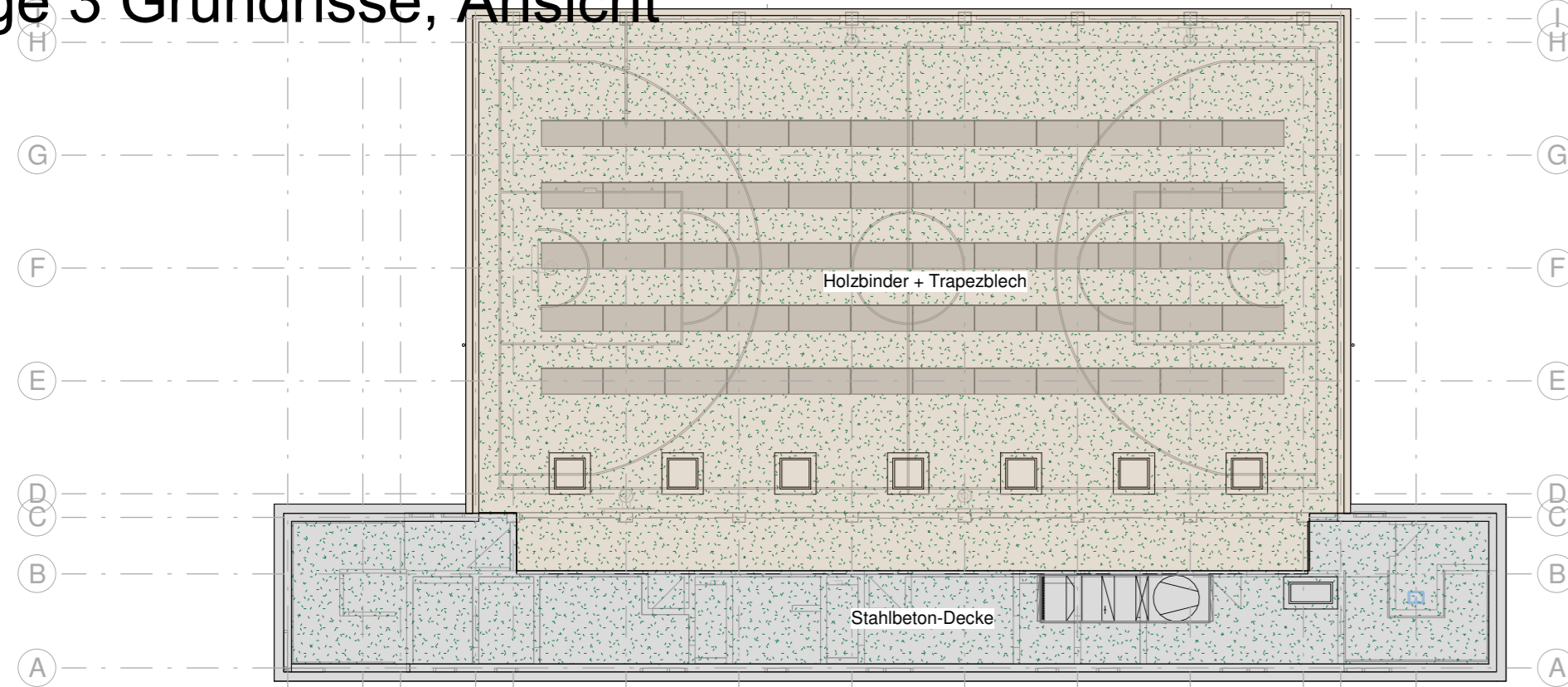
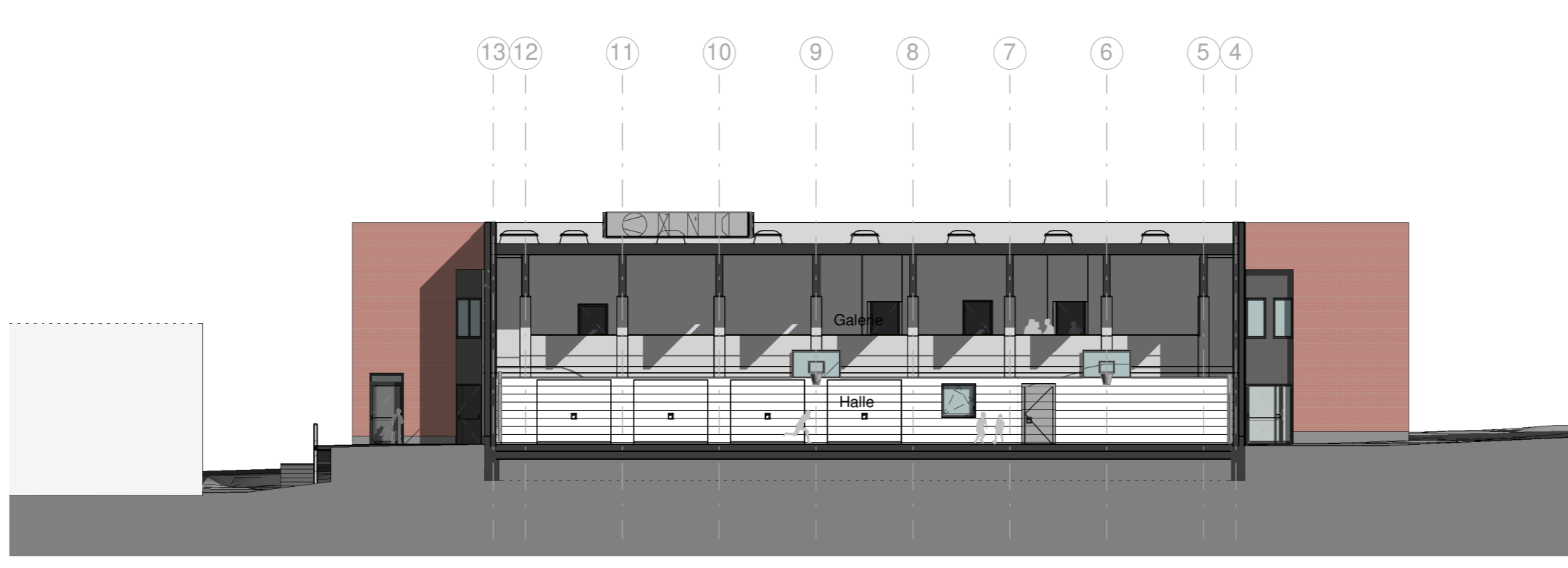


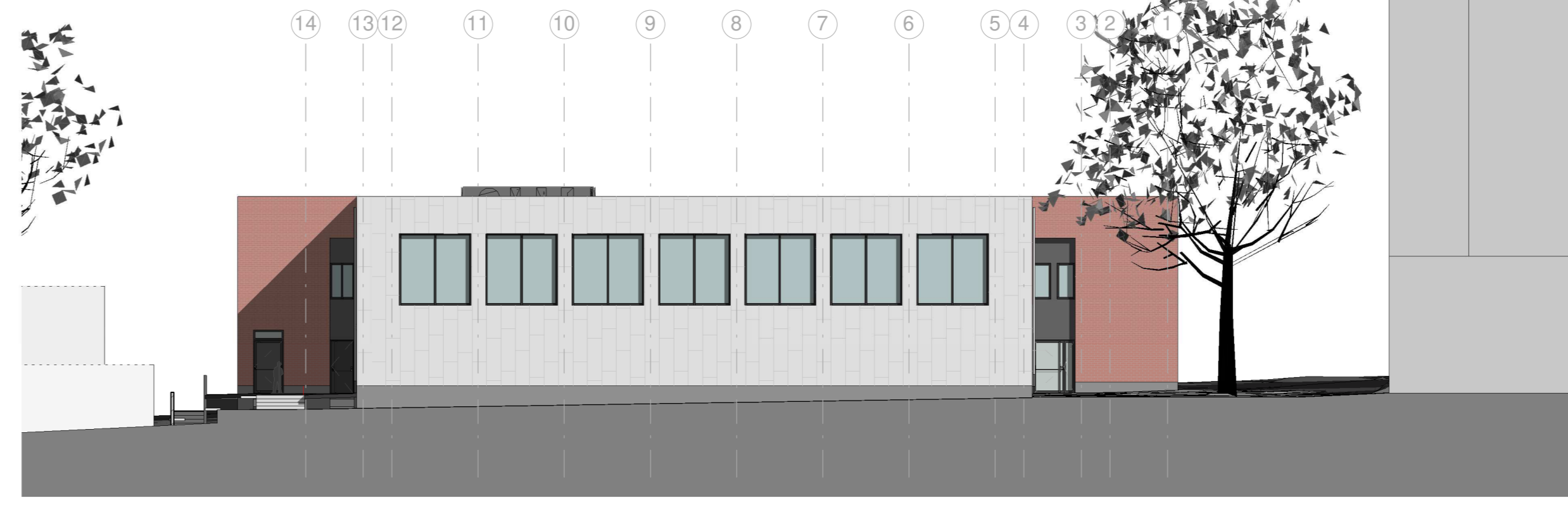
Anlage 3 Grundrisse, Ansicht



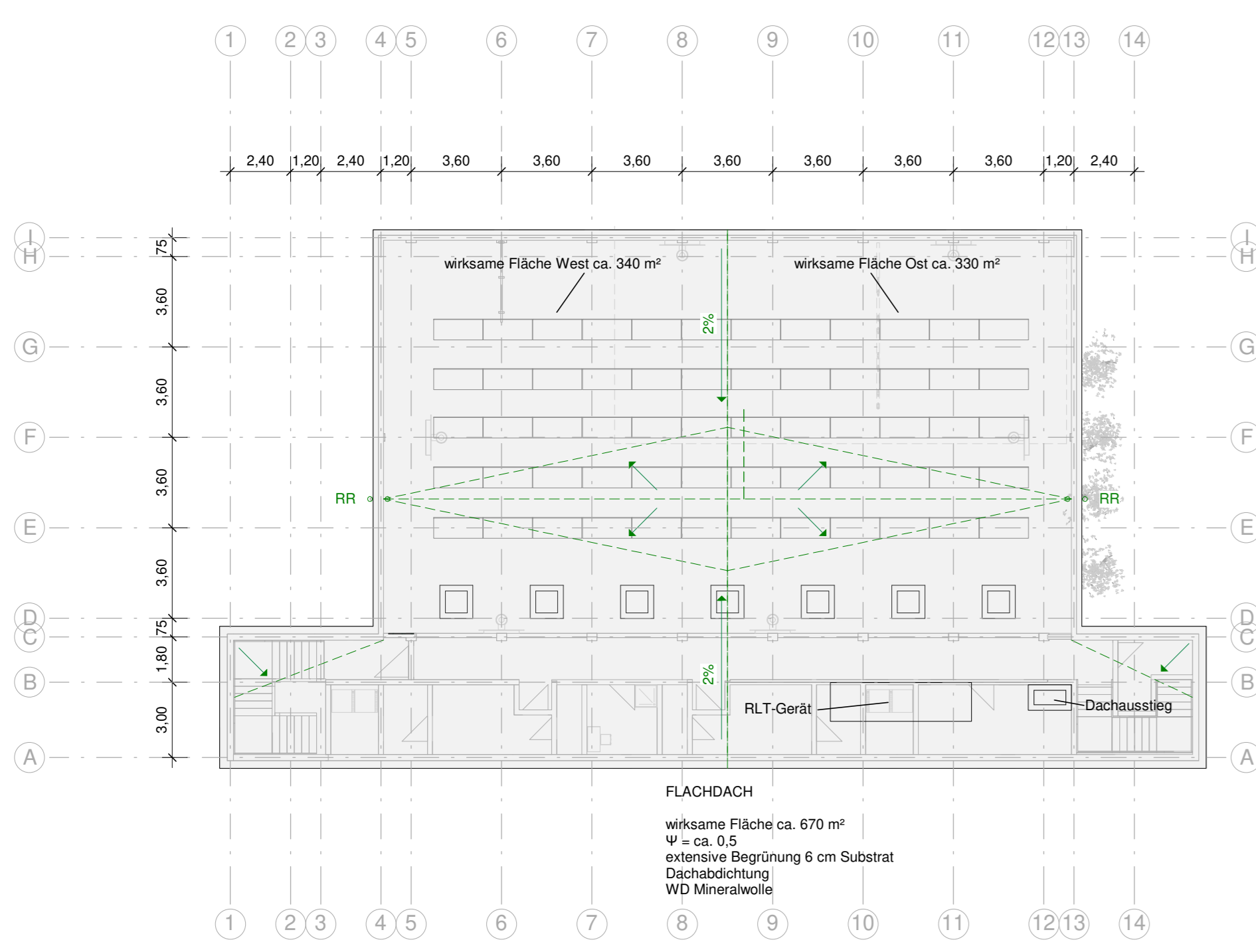
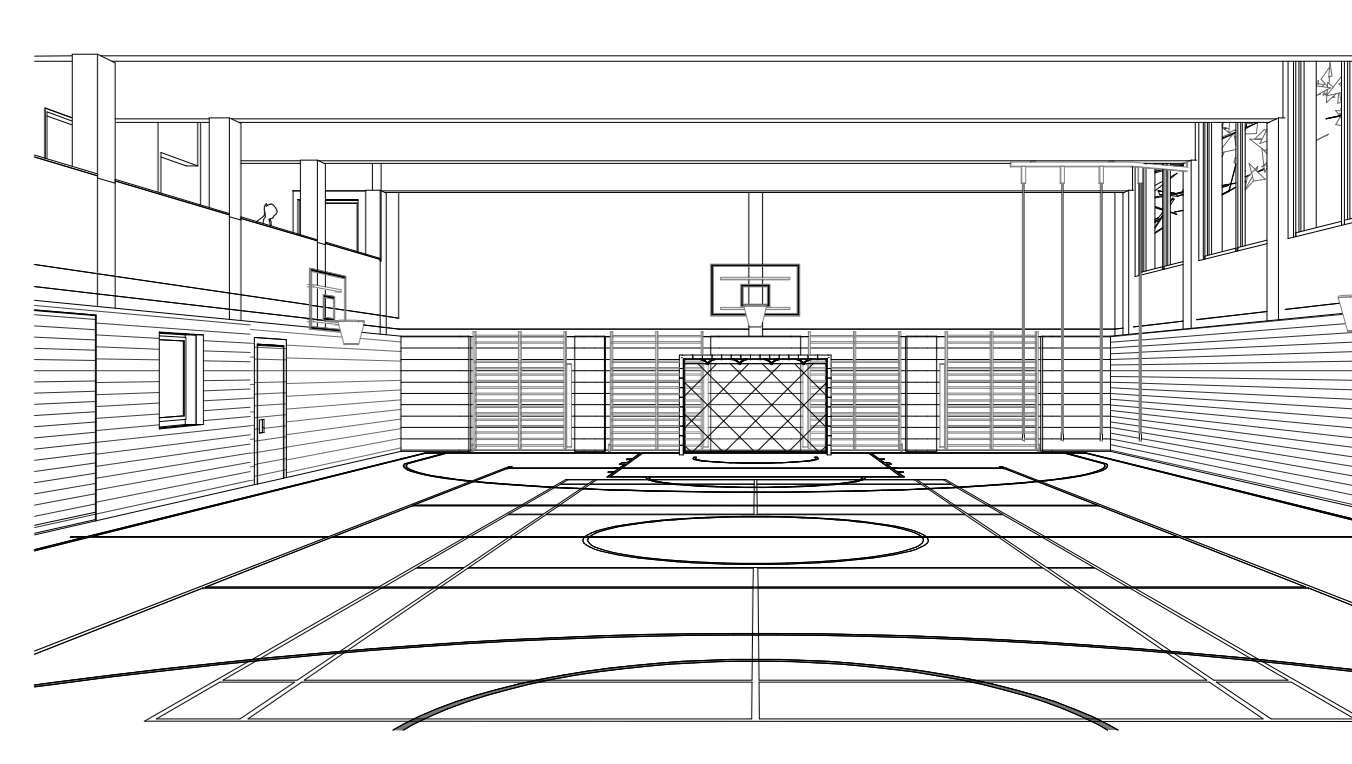
Dachkonstruktion M 1:200



Schnitt A_A M 1:200



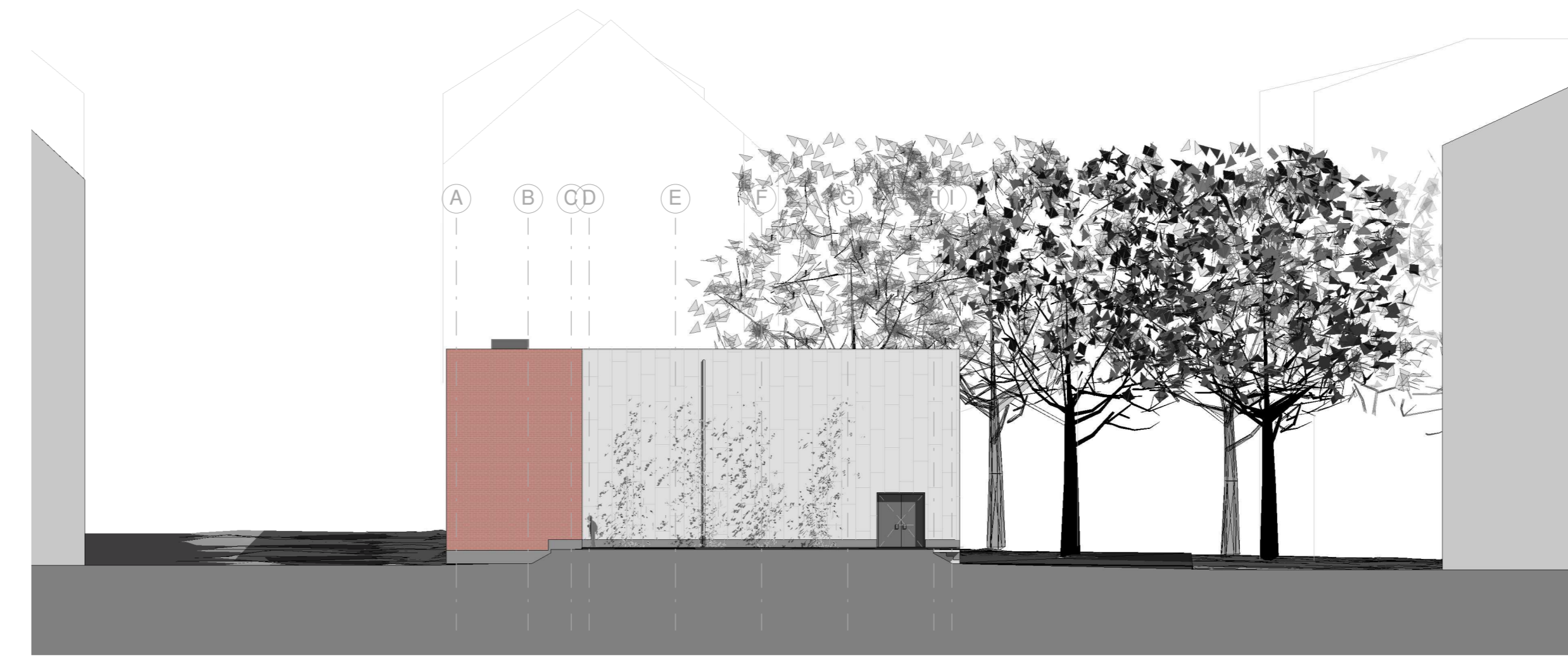
Ansicht Nord M 1:200



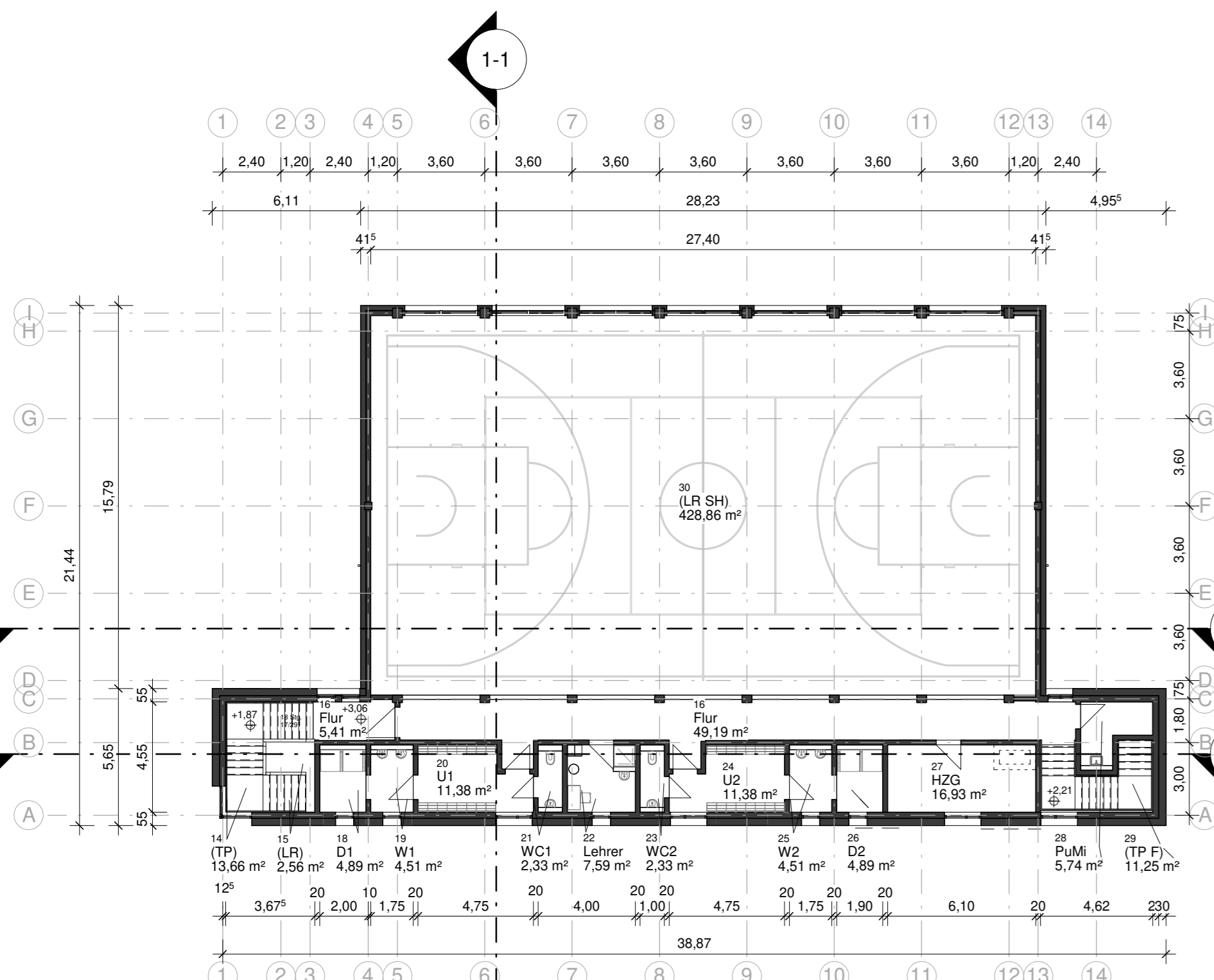
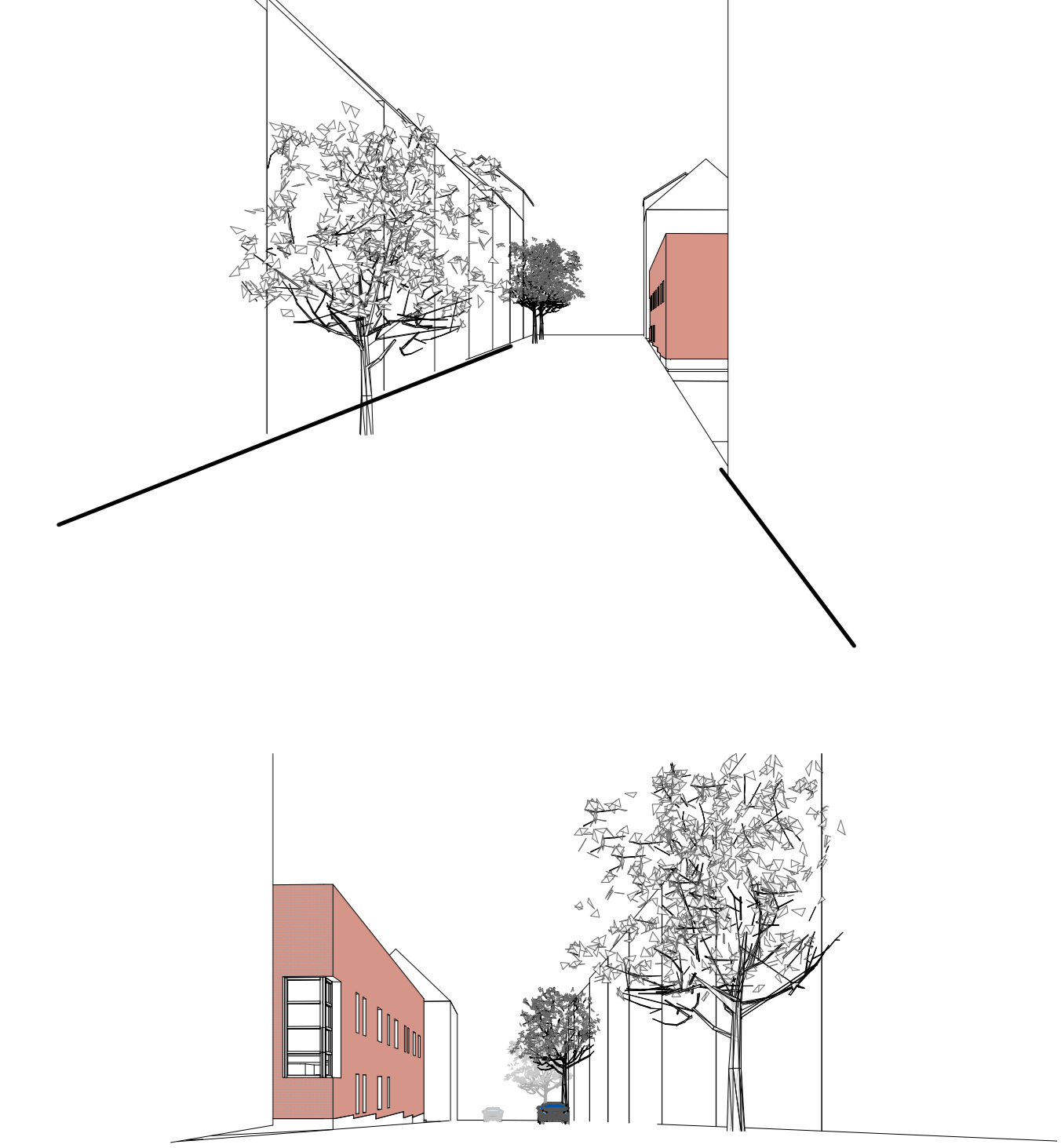
Dachaufsicht M 1:200



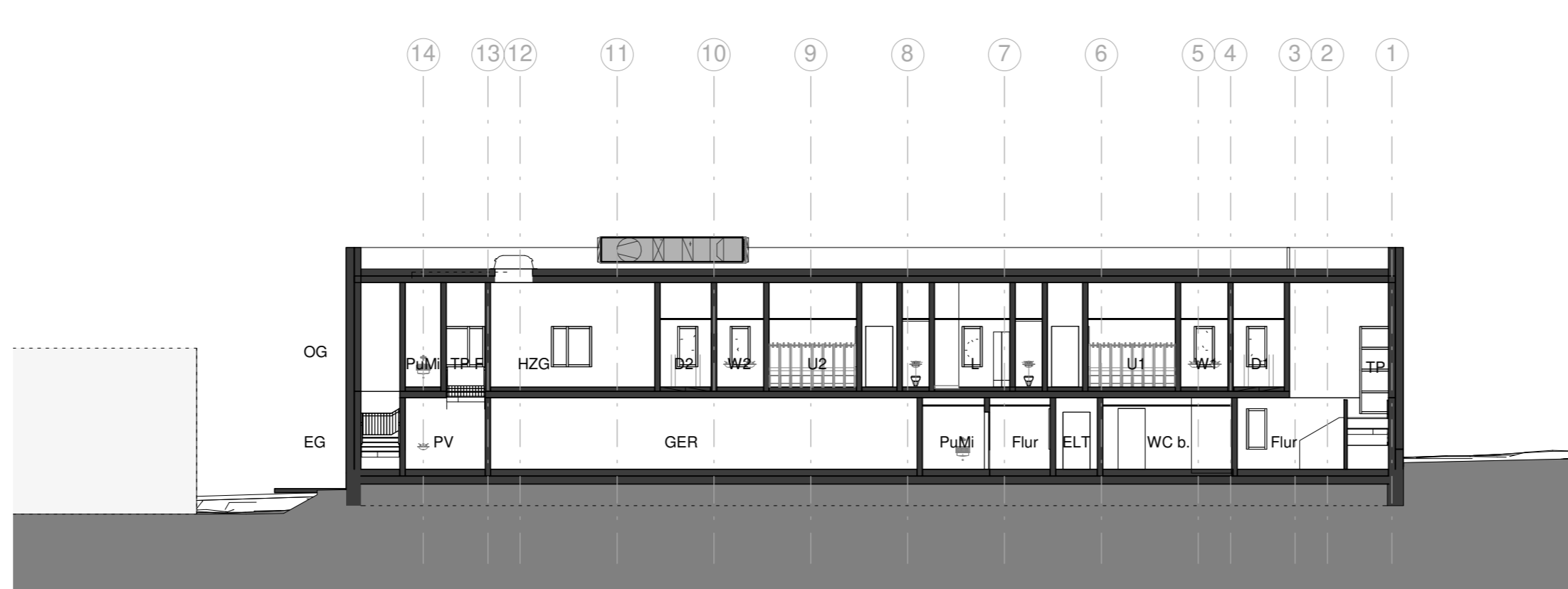
Schnitt 1_1 M 1:200



Ansicht Ost M 1:200



1. Obergeschoss M 1:200



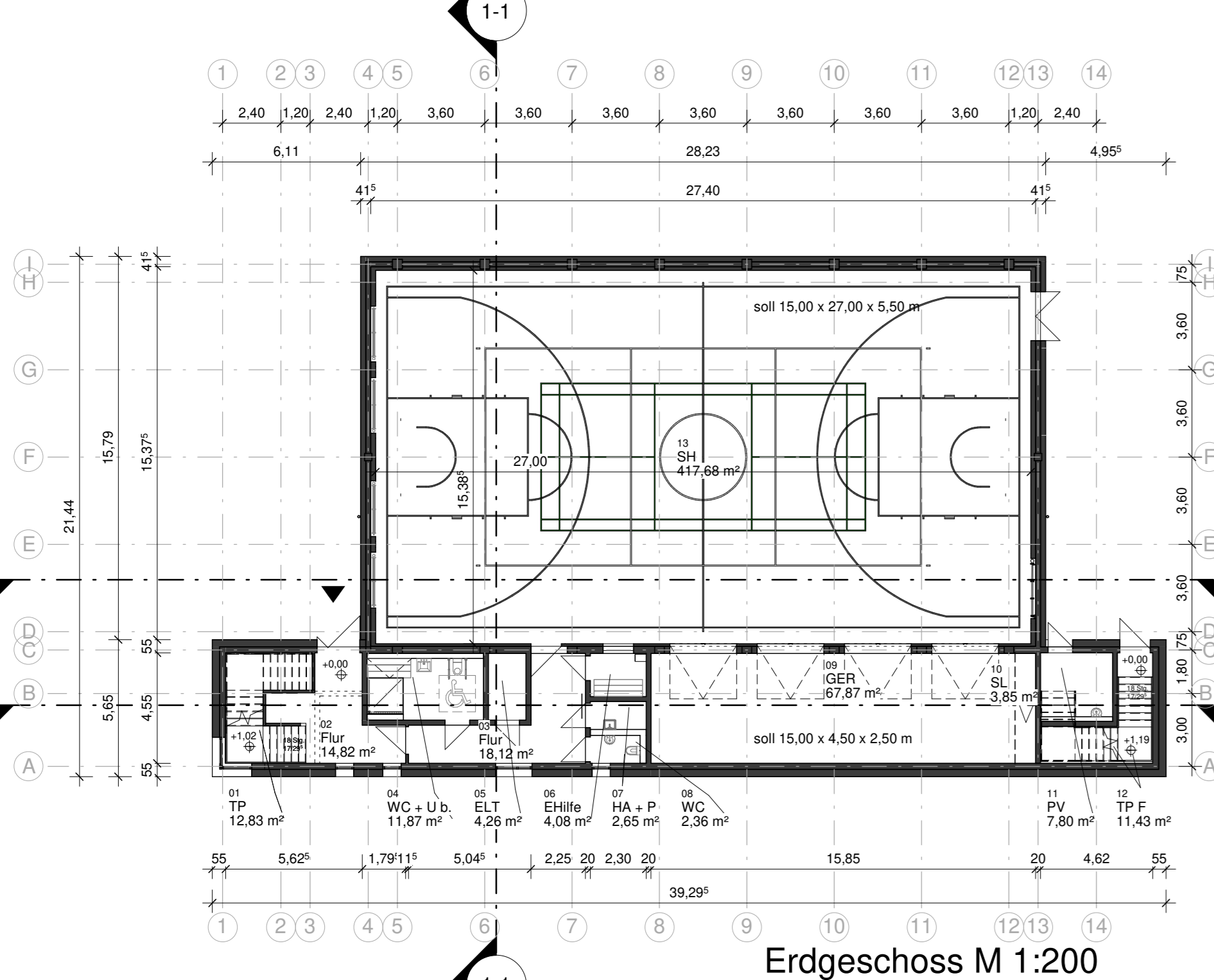
Schnitt B_B M 1:200



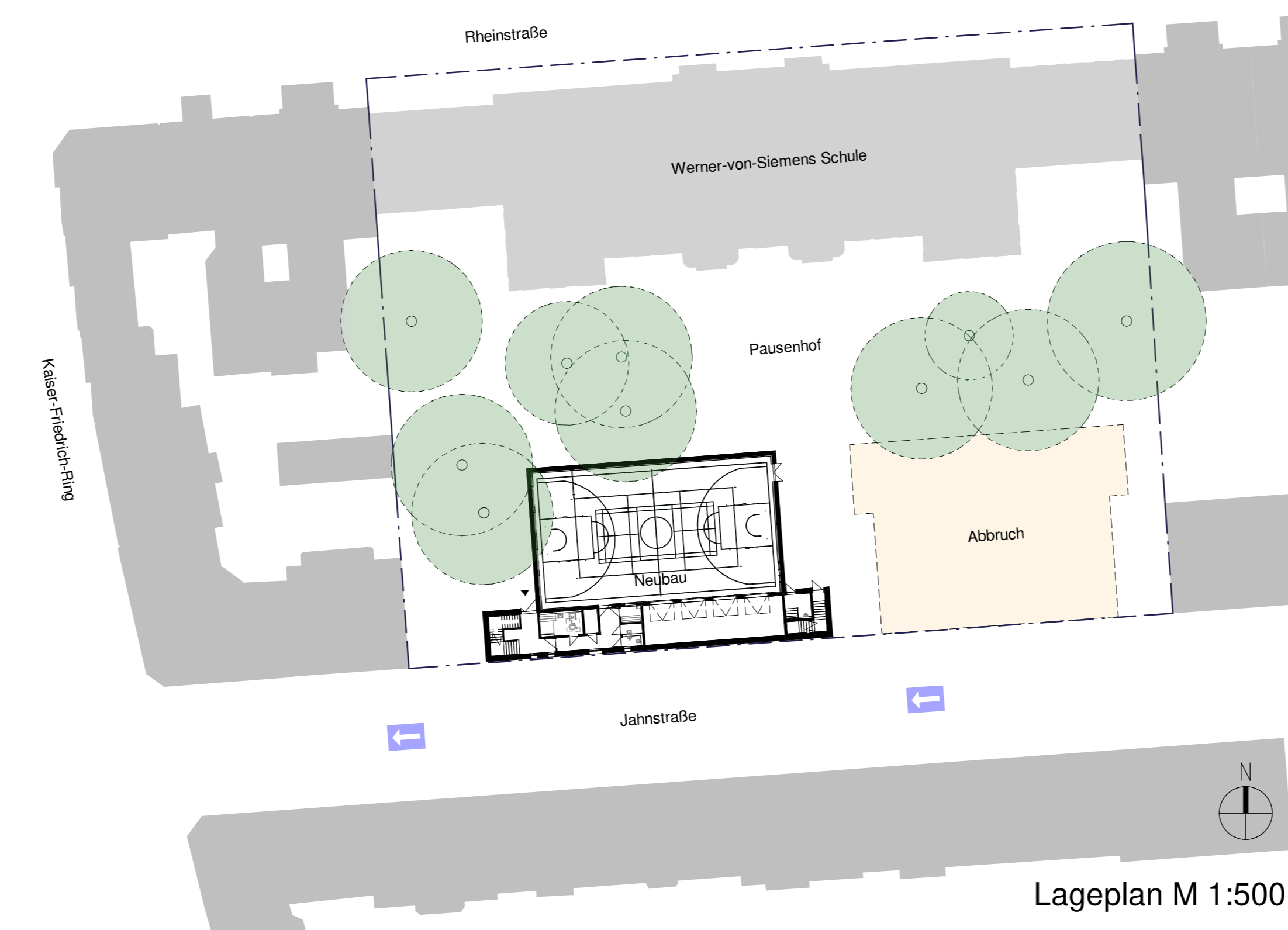
Ansicht Süd M 1:200



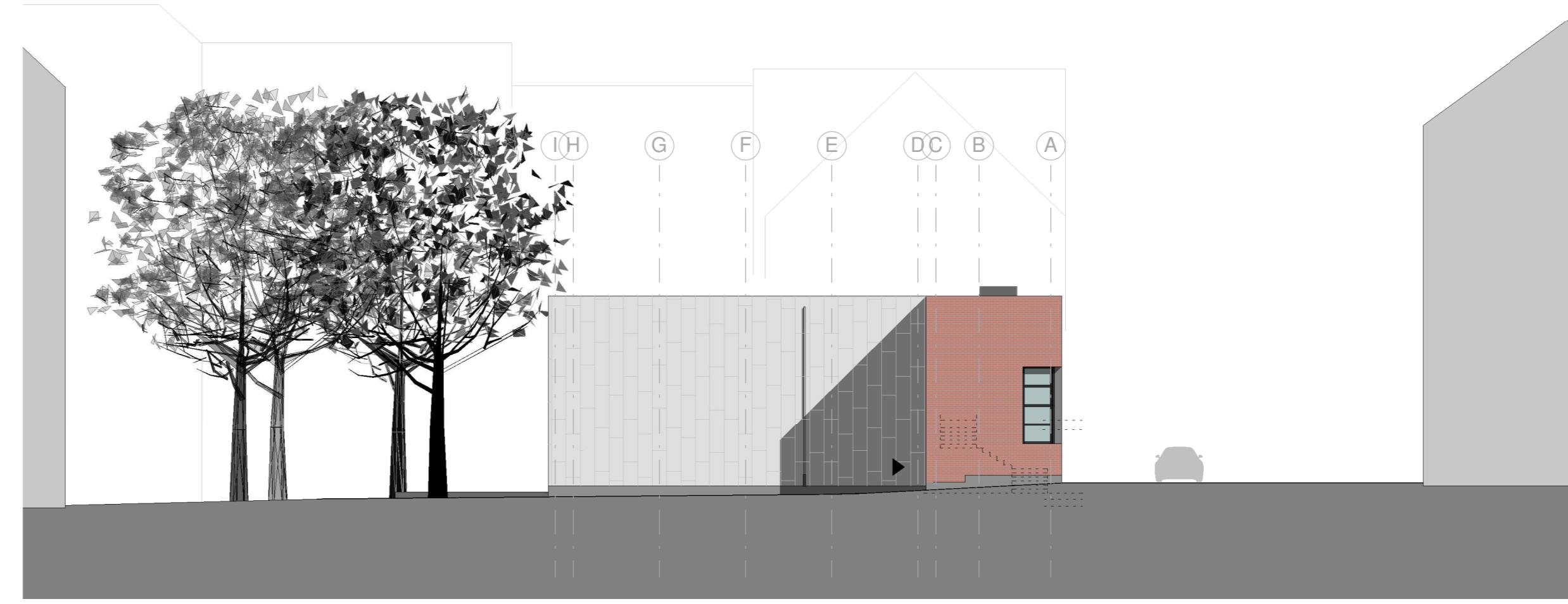
±0,00 = 134,60 m NHN



Erdgeschoss M 1:200



Lageplan M 1:500



Ansicht West M 1:200



Vorabzug 2021-07-15

Nr. Änderungen		gezeichnet	gezeichnet	gezeichnet	gezeichnet
Projekt: Werner-von-Siemens-Schule Neubau Turnhalle Adresse: Rheinstraße 102, 65195 Wiesbaden					
Leistungsphase: Vorentwurf					
Planinhalt: Übersichtsplan	Plan-Nr.: A 003	Maststab: 1:200 / 1:500	m, cm		
Vorbereitender: WIBau GmbH Konrad-Adenauer-Ring 11 65187 Wiesbaden	Anlage: 196870	gezeichnet: 07.2021	Proj. Nr.: 196870		
Entwurfsverfasser: BAURCONSULT ARCHITEKTEN INGENIEURE Rheinstraße 102, 65195 Wiesbaden, M. 071 408 9343100-0					
Datum: _____ Unterschrift: _____					